

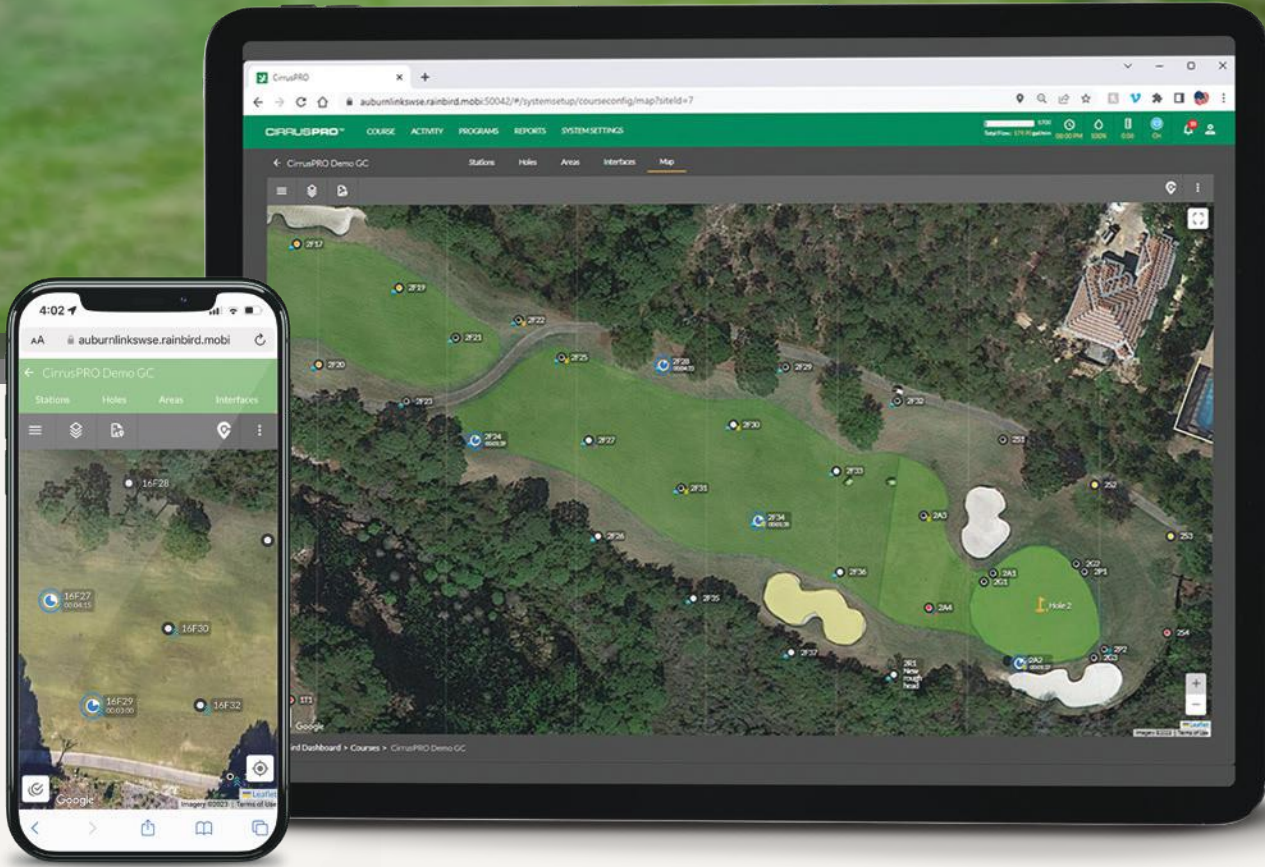
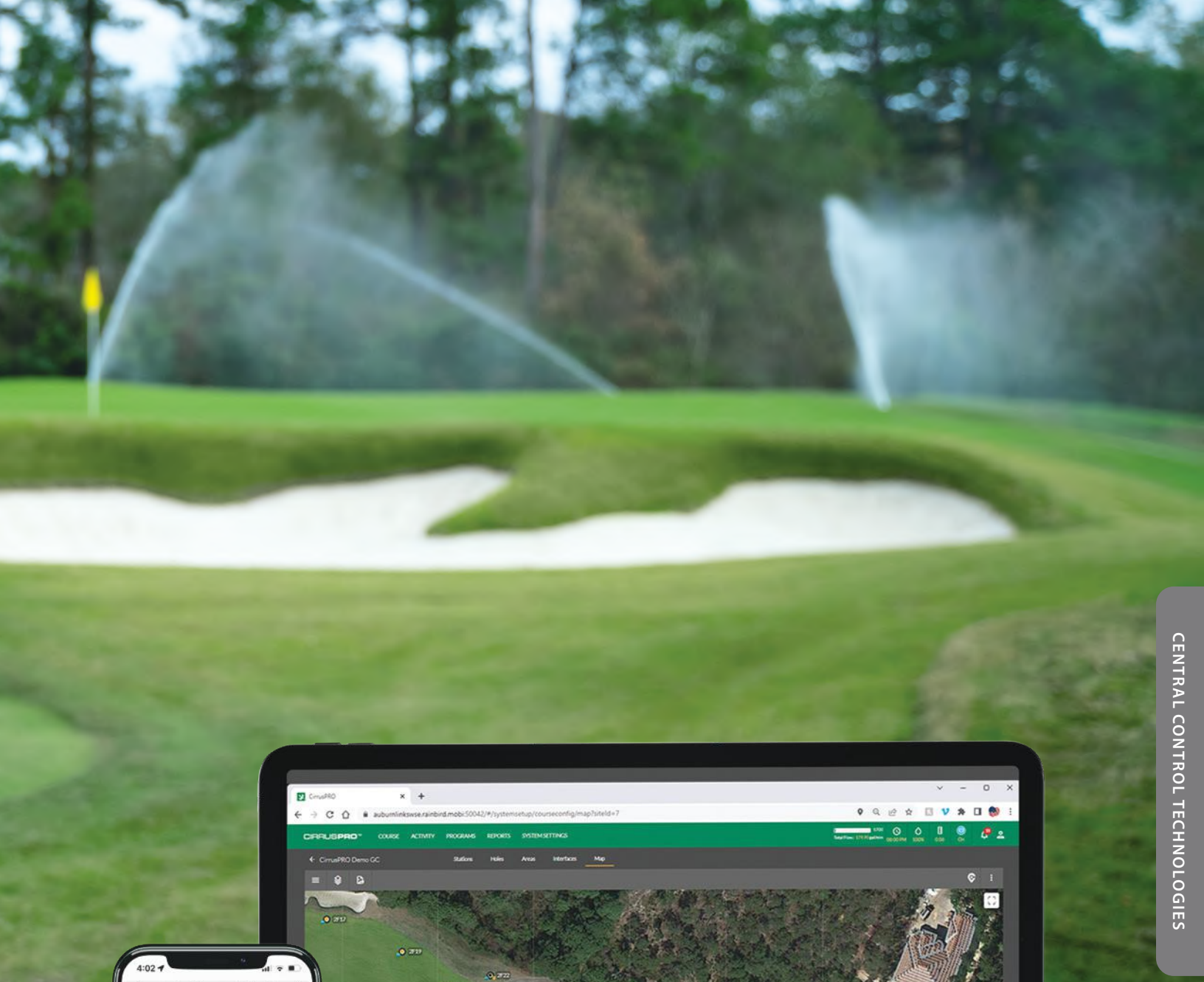


*Whispering Pines*

## Central Control Technologies

### ***Make Your Investment Work Smarter.***

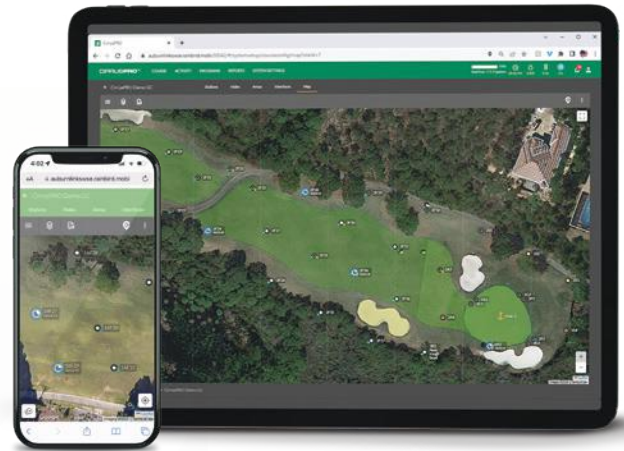
Level up your game with the CirrusPRO™ Central Control System. With real-time responses to changing conditions, you'll simplify irrigation management. Timeless Compatibility™ lets you rest assured that any Rain Bird software and its future updates will work with your existing field hardware.





## CirrusPRO™

Go completely mobile with CirrusPRO and get full central control from a mobile device anytime, anywhere, any place. With CirrusPRO you can make any irrigation changes directly from the map and watch your updates happen in real time. No matter what the day brings, you'll be ready with CirrusPRO.



### FEATURES & BENEFITS

Engineered to help you save time and money, CirrusPRO offers a state-of-the-art golf irrigation control system with an intuitive user interface (UI) and precise water management features.

- **Irrigation That Goes Where You Go:** As the only mobile-first irrigation control system on the market, you get a high level of performance from anywhere, on any device.
- **More Freedom:** Add unlimited users, choose from multiple languages and adjust settings for multiple stations all at once.

- **Better Data:** Irrigate precisely with real-time data that monitors and notifies about course conditions.
- **Complete Control:** Water through patented Rotation, Application, ET and Runtime.

CENTRAL CONTROL TECHNOLOGIES






### SOFTWARE HIGHLIGHTS

- Custom course, hole and station names
- Programming in seconds, minutes and hours
- Runtime control through System Level Water Budget, Program Adjust, Schedule Adjust, Schedule Level Temporary Adjust, Program Level Temporary Adjust, Station Level Temporary Adjust as well as Station Adjust
- Detailed reports including: Station Runtime, Alarms and Warnings, Monthly Report Card, Monthly Flow, Flow Log Graph, Water Management, Yearly Water Consumption and Rainfall
- Weather data communication
- Automated email and texts for alarms
- Automatic weather-based adjustment from a wide range of weather source options
- User-selectable languages
- Configurable settings by user
- Make irrigation adjustments directly from the map
- Compatible with Rain Bird Golf Irrigation Systems

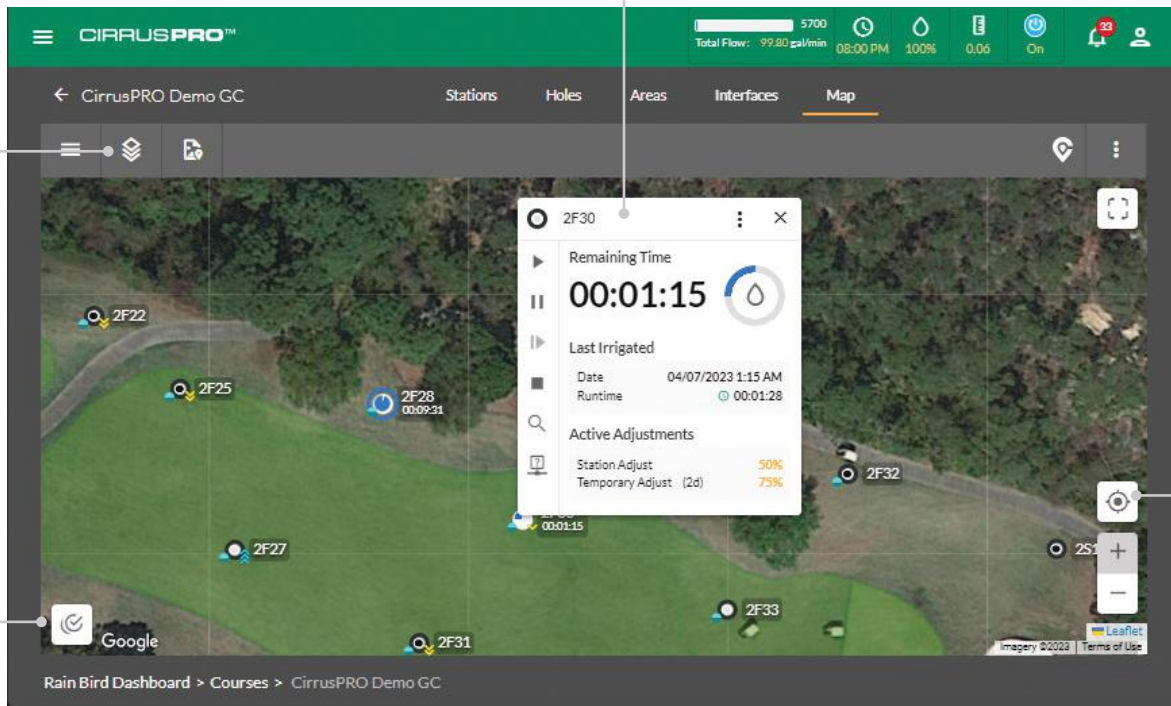
**CUSTOM MAP LAYER ICONS**

Check high-level information without selecting a station.

-  Identify stations with irrigation adjustments
-  View stations programmed for Cycle+Soak™
-  See remaining station time

**STATION WINDOW**

Map access offers important station information quickly and easily. Select any rotor on your map to access the station window. Then execute irrigation actions like starting, stopping, pausing and resuming a station. Users will see the time remaining, last time a station was irrigated, any active station adjustments, run and view diagnostics.



**MULTI-STATION SELECTION**

Complete tasks faster in fewer clicks. Select multiple stations while on the course to perform irrigation actions with ease.

**FIND ME**

Pinpoint current location to irrigate nearby areas with ease.

**TROUBLESHOOT DIRECTLY FROM THE MAP**

Eliminate the need for separate applications like MI or Freedom and quickly run irrigation or diagnostics in real time directly from the map.

**IRRIGATE WITH PRECISE CONTROL**

Patented watering by rotations gives you control of irrigation with unparalleled precision.

**CUSTOM DASHBOARDS**

Customize your dashboard with drag-and-drop functionality to display the data that matters to you.

**OPTIMIZE YOUR IRRIGATION WITH DRYRUN™**

Quickly preview the efficiency of your irrigation schedule allowing for adjustments prior to irrigation events to shorten water windows, optimize pump efficiency and save electricity.

## Rain Can

A rain can working in tandem with our patented Rain Bird® Rain Watch™ technology responds in real time to rain events; reducing wear and tear and creating a more efficient, intelligent system.



### FEATURES AND BENEFITS

- The only system designed to automatically react to rainfall and adjust sprinkler application rates to take full advantage of natural rain, thereby eliminating over-watering.
- Saves water and electricity, while keeping the course drier and more playable, by pausing, adjusting or canceling irrigation in the event of rainfall.
- Results in reduced wear and tear on irrigation system components.

### HOW RAIN WATCH MANAGES RAINFALL

- Stationed throughout the course, up to four (4) high-resolution Rain Watch rain cans collect rainfall data.
- Each irrigation program can be set to react to any one of the available rain cans.
- The central control system continuously polls each rain can.
- Rainfall data received by the system is used to make intelligent decisions based on user-defined responses.

## WS-PRO2 Weather Station

Rain Bird offers the WS-PRO2 weather station to help meet your course's unique irrigation management needs. WS-PRO2 provides evapotranspiration (ET) management and reporting capabilities and optional intelligent alarm and irrigation control responses through Rain Bird's powerful Smart Weather™ software.

### HOW TO SPECIFY

WS - PRO2 - XX		-	X
CONNECTION		POWER	
SH = Short Haul		Blank = User Supplied	
		S = Solar Powered	

### FEATURES AND BENEFITS

**Superior ET Model.** Rain Bird Central Control systems use weather sensor input to determine ET rates based upon a field-proven proprietary equation for ET.

**Automatic ET Download/Selective Usage.** Automatically download weather data daily and calculate ET to determine irrigation times for the entire system or by specific areas, holes or stations.

**ET Override.** Allows you to easily set certain programs to ignore ET values when determining run times.

**Rain Bucket.** Allows rainfall from one day to be carried over to the following day(s) for more accurate ET calculations.

**Multiple Station Capacity.** Connect up to five (5) weather stations to one central control system for more precise ET values based upon different weather conditions and micro climates around the golf course.

**Max Rainfall.** User-defined maximum rainfall can be set to limit the amount of acceptable rainfall for specific soil types or other areas that are subject to high run-off.

**Weather Data Reports.** Generate reports to show current or past weather conditions by the hour, day, week, month or year. Along with Rain Bird's Smart Weather Software, it supports alarms when thresholds are exceeded in: rain, high or low ambient temperatures, high winds or rainfall intensity.

When any of these alarms exceed user-defined thresholds in a programmed time period, the system will initiate an alarm condition. The alarms will automatically reset when temperature, rain or wind conditions are again within acceptable ranges for irrigation.

**Automatic Shut Off/Turn On and Pause/Resume.** Rain Bird Central Control systems automatically shut OFF or suspend irrigation operation for the entire system or in specific areas of the course (tee box, fairway, green, etc.) when alarm conditions are detected at the weather station. They also automatically turn ON or resume irrigation when weather conditions return to the acceptable range for irrigation.

**Automatic Notification.** Using Rain Bird® Messenger™, it can automatically notify you wherever you are — at the central control, via text messaging or e-mail — when alarm conditions exist.



## The FREEDOM System™

The FREEDOM System handheld provides reliable, two-way communication with your Rain Bird system. Use it to choose from command-based or schedule-based operations, making irrigation adjustments a snap. Either way, The FREEDOM System puts you in control of your irrigation management system wherever you are.

### SYSTEM FEATURES AND BENEFITS

- **Two-way Communication with Rain Bird Centrals.** Audio response at radio indicates command received by central.
- **Station- and Program-Based Commands.** Provides the flexibility to turn ON or OFF any station or an entire area with the click of a few buttons.
- **FREEDOM-Based Commands Recorded at Central.** Irrigation activity logged at the central whether stations turned ON with FREEDOM System or with central.
- **Optional Flo-Manager® Bypass.** Permits FREEDOM user to bypass Flo-Manager.
- **Optional Operating Window.** Allows user to define FREEDOM usage hours, which helps superintendents to control irrigation activity.
- **Two-Way Voice Communication.**
- **Telephone Operation.** All FREEDOM commands can be activated using a telephone connection.

### RADIO FEATURES AND BENEFITS

Weather-resistant and reliable. The NX-3320-k3 handheld radio is built to survive the drops, hard-knocks and weather environments of its users. The NX-3320-k3 meets or exceeds the demanding MIL-STD "driven rain" standard, which guarantees water-resistant performance even in wet weather.

- **LCD Display.** 4-line basic (2-line main/sub-LCD, icon & key guide) with 14 characters; 5-line text message frame (3 lines of text, icon & key guide).
- **Extra-Long Battery Life.** 1400 mAh batteries deliver more than nine (9) hours of operating time on a single charge (5-5-90 duty).
- **One-Year Warranty.**
- **MIL-STD 810 C/D/E/F Environmental Tests.** Meets or exceeds the stringent IP/54/55 dust and IP67 water intrusion standards and full range of tough MIL-STD 810 C, D, E, F and G environmental standards in categories such as vibration, shock, dust, humidity, rain, temperature, solar radiation and atmospheric pressure.

### SPECIFICATIONS

**Frequency:** 450 – 470 MHz (Narrowband)

**NOTE:** Site survey and license required

**Power:**  
**100 V/110 V:** 60 Hz

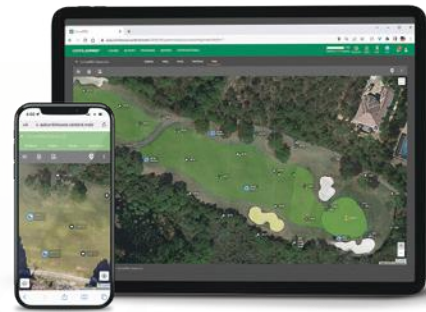
#### HOW TO SPECIFY

<b>FREEDOM</b>	–	<b>SP</b>
MODEL		CONTROL TYPE
FREEDOM		SP



## CirrusPRO

Our most advanced option, CirrusPRO controls many of golf's most sophisticated irrigation systems. As a fully mobile central control, you can adjust irrigation in real time from anywhere at any time, via a mobile device.



## Nimbus™ II

Nimbus delivers advanced features with simple administration, ideal for saving time and effort while maintaining premier playing conditions. ET-based scheduling, precise flow management and real-time adjustments help you get the most out of every drop of water.



## Stratus™ II and StratusLT™

Offering two options, the Stratus platform is an excellent choice for simple-time or ET-based scheduling. Choose to start with the basics, or upgrade to more advanced capabilities. With either system, Rain Bird delivers the ease and convenience you want in a Central Control system, aiding superior turf and playing conditions throughout the year.



Specifications	Nimbus II	Stratus II	StratusLT
Map-Based Control	Up to 3 Courses (54 Holes)	Up to 2 Courses (27 Holes)	Up to 18 Holes
Programs	Unlimited	500	250
Schedules	Up to 50 per Program	Up to 25 per Program	Up to 25 per Program
Interfaces	Up to 8	Up to 2	1 (Not expandable)
Satellite Stations	Up to 21,504	Up to 5,376	Up to 672
IC Stations	Up to 24,000	Up to 6,000	Up to 750
Pump Stations	Up to 6	Up to 6	Up to 2
Weather Stations	Up to 5	1	1 (WS-PRO LT only)
Hybrid Communication	Up to 8 Interfaces	Up to 2 Interfaces	—

## MI Series™ Mobile Controllers

Remote access to your central control is now as convenient as the Internet, with mobile control. This software runs on your central control computer to provide remote irrigation control via a web-enabled device or smartphone.

Rain Bird® MI Series mobile controllers are designed to work on a smartphone or tablet with Internet connectivity and offer greater remote operation capabilities than anything else available.

When connected to the Internet, up to nine (9) remote users can simultaneously control sprinklers and programs, review system activity or directly change settings on both sprinklers and irrigation programs. All activity is logged and viewable in MI at the central control for convenient review.

MI Series mobile controllers also include the MI FREEDOM user interface. MI FREEDOM provides two smartphone interfaces for users to implement traditional FREEDOM commands: 1) Handheld radio keypad for users with handheld radio keypad experience. 2) Soft keyboard interface for use of The FREEDOM System™ commands on a standard smartphone virtual keyboard.

MI Series Mobile controllers now include the Command Console input method. Combining the speed of MI FREEDOM keypad input with the convenience of drop down action menus, Command Console is the most powerful and fastest activity control method available for manual activation, deactivation, status checks and remote programming.

### SYSTEM REQUIREMENTS

- Compatible with Cirrus, Nimbus II, Stratus II, StratusLT.
- Requires an Internet connection to the central control.
- Requires a web-enabled smartphone or tablet with a data plan.

#### HOW TO SPECIFY

<b>MI</b>	-	<b>XXXX(X)</b>
<b>MODEL</b>		<b>CONTROL TYPE</b>
MI		ADVAN = Advanced PROF = Professional

Software license only —  
phone or tablet not included.

Contact us!  
Authorized Distributor in Indonesia  
PT. SAHABAT AGRITAMA

### Feature Comparison

Link Name	Advanced	Professional
Satellites (Areas)/Stations	X	X
Programs/Schedules	X	X
Diagnostics		X
Accessories		X
Alarm Log		X
Cancel All	X	X

### Accessories

Link Name	Advanced	Professional
Water Budget		X
Demand Flow	X	X
Smart Pump™		X
Smart Weather™		X
Activity Log	X	X
Online Users	X	X

### Available Options

	Advanced	Professional
<b>PROGRAMS</b>		
Execute	X	X
Get Status	X	X
Edit Data	X	X
<b>SCHEDULES</b>		
Execute	X	X
Get Status	X	X
Edit Data	X	X

